

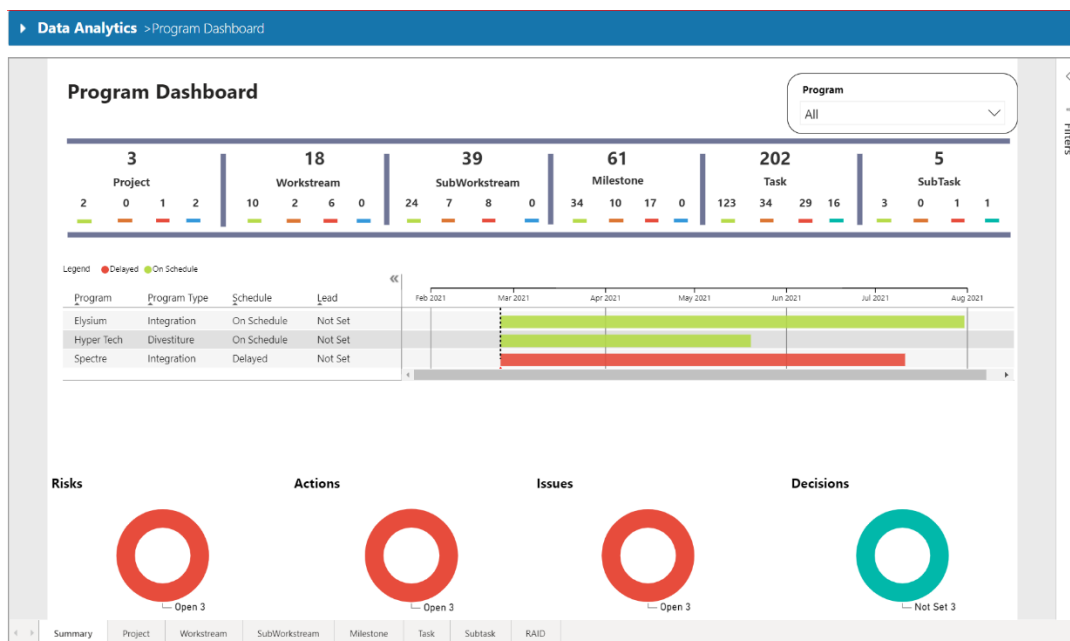
Release Notes “Winter 2020.R3”

Product Features:

- **Due Diligence Portal**
 - Import functionality for request items and follow-ups – Allows sell side users to export and import request/responses in the Diligence Portal.

- **IMO Dashboard (Home Landing Page)**
 - Dashboard shows overview of top 3 activity levels viz. Project, Workstream, Sub Workstream.
 - UI enhancements - Rows condensed to show more data and reduce white space. Activities are now hyperlinks identified with blue text.
 - Ability to configure number of records in each section as 5,10,15 or 20 via the drop down at the bottom right of each table.

- **Program Dashboard Analytics Report**
 - Users now have a newly designed Program dashboard report under Analytics menu. Shows a snapshot of all programs within the organization with a Gantt chart and breakdown of activity items and status including RAID items.
 - Multiple pages in the report provides individual activity level details in a tabular format
 - Datasets are update with additional fields so user can update/add more fields as needed.



Product Improvements:

- **Operational Reports**
 - **Report reorder and categorization** – Operational reports have been reorganized for quick access to most utilized reports under appropriate group names.
 - **Deal Pipeline report & Target Custom Properties** – User created Custom Properties will now be dynamically added to the Operational Deal Pipeline report.
 - **High-Level Gantt Report** – Cosmetic changes to condense output to improve user readability.
- **Enhanced Help Menu**
 - Improved Help Menu for easy access to Knowledge (formerly Support Portal) and Product Ideas portals.
- **Activity Map Cosmetic Changes Column Separation**
 - Added column separation between Status indicator and Recent Notes column for better visual readability.

What's Fixed?

- **Diligence Portal**
 - Export file from portal no longer includes follow up request items that were not sent to sell side.
 - Export file from portal no longer includes comments from internal users.
- **Date format in Activity Map import/export file**
 - Removed timestamps from planned, forecast and actual dates for cleaner output.